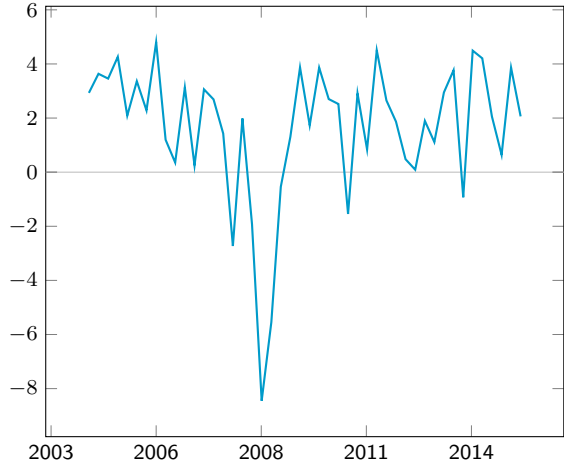


# MACRO AND MARKETS DASHBOARD: United States

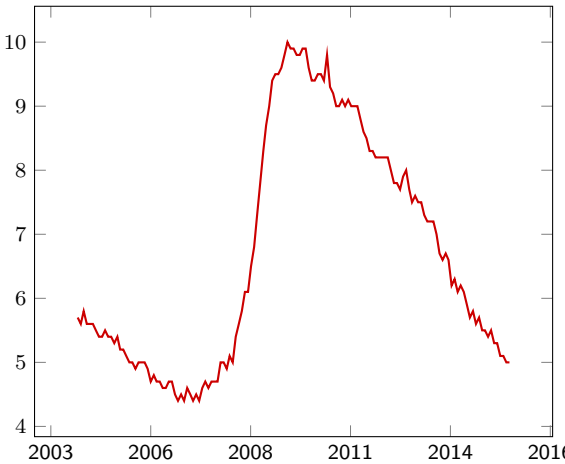
## I. Macroeconomic Indicators

GDP growth (percentage change)



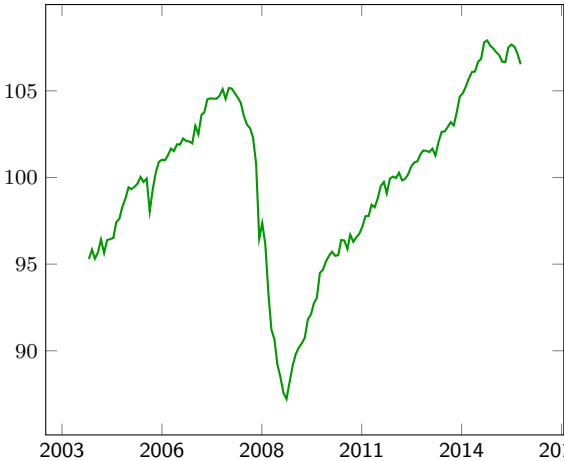
Quandl: FRED/GDPC1

Unemployment rate



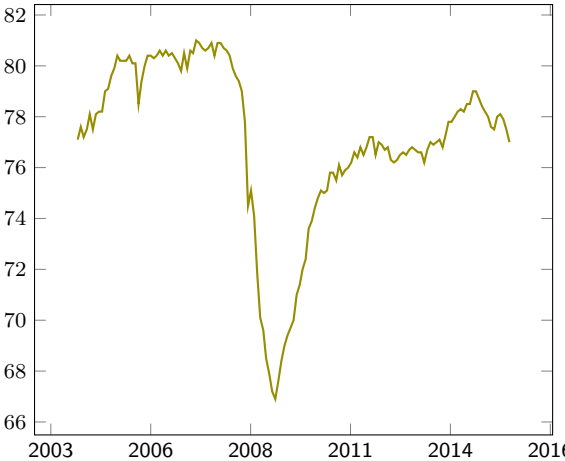
Quandl: FRED/UNRATE

Industrial production index (2007=100)



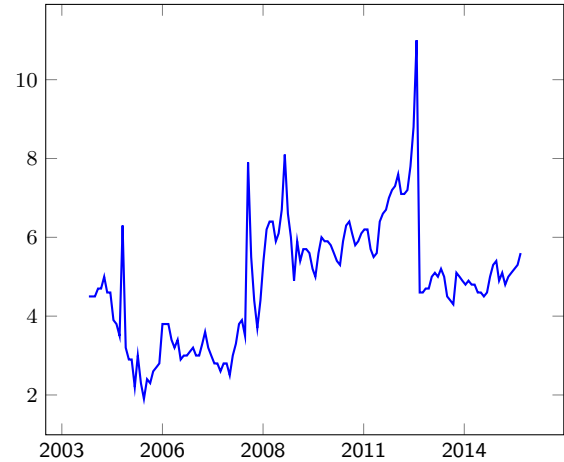
Quandl: FRED/INDPRO

Capacity utilization (percentage of capacity)



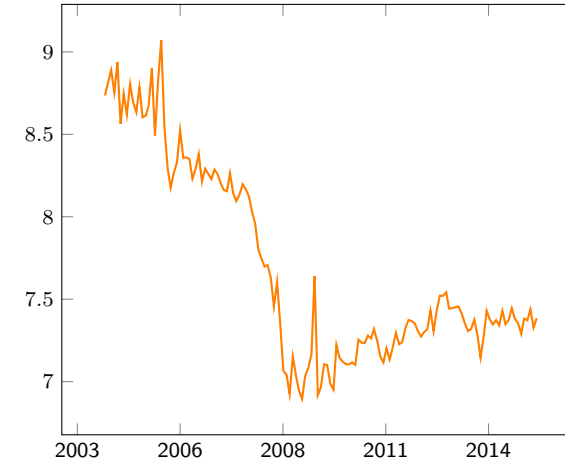
Quandl: FRED/TCU

Personal savings rate (percentage of disposable income)



Quandl: FRED/PSAVERT

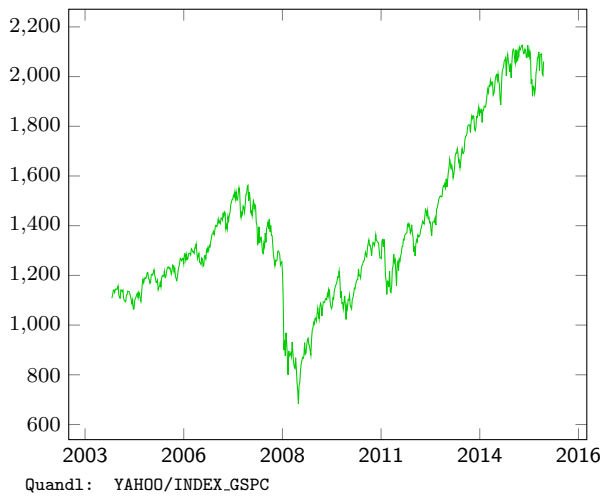
Durable goods spending (percentage of GDP)



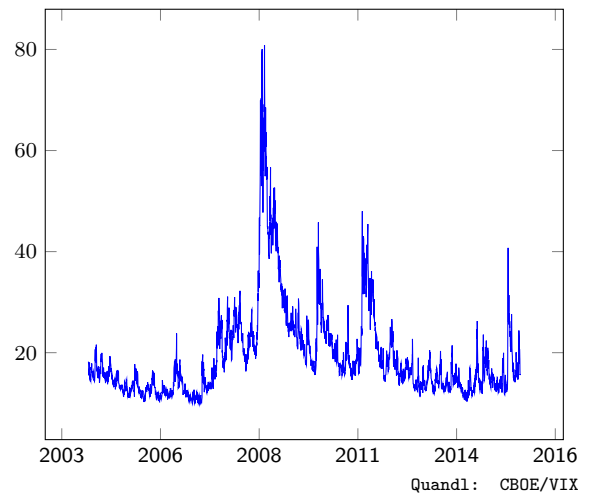
Quandl: FRED/PCEDG

## II. Markets

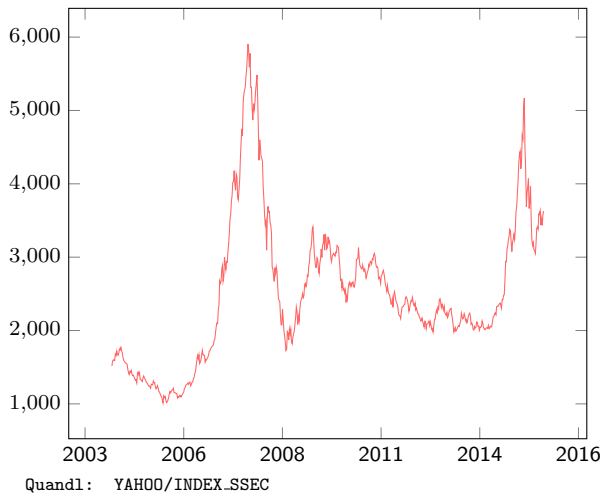
S&P 500



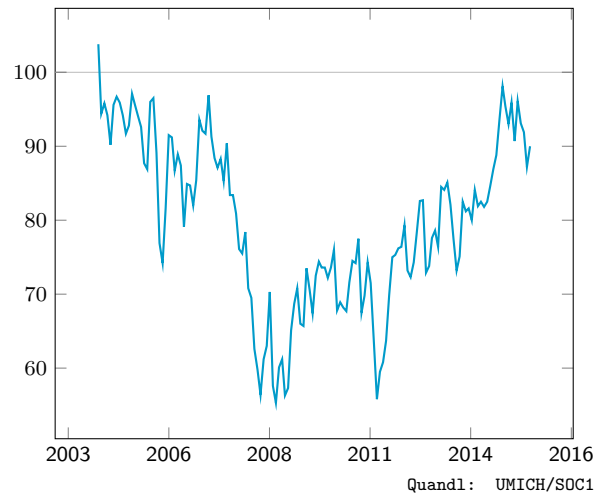
Volatility index



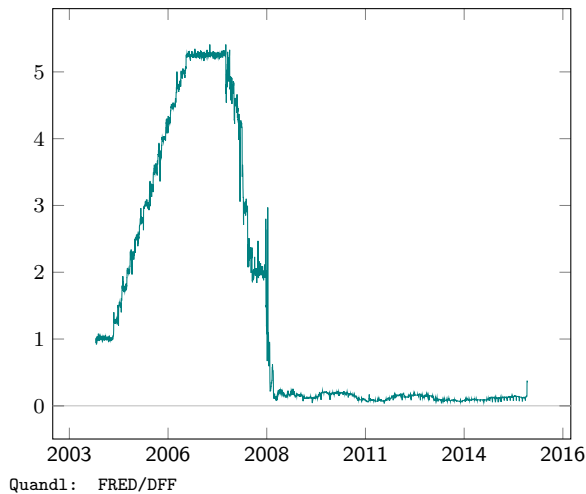
Shanghai composite index



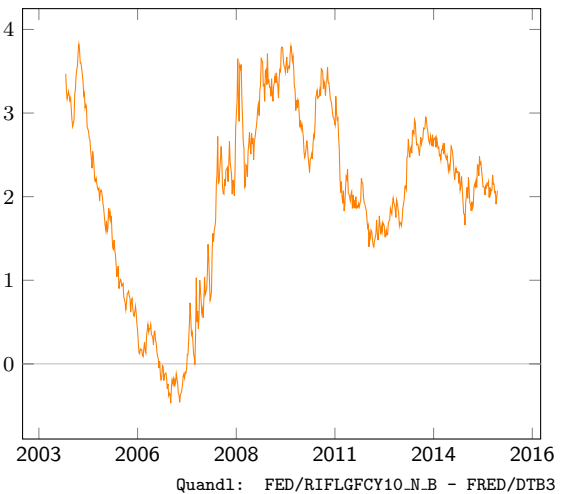
Consumer sentiment



Effective fed funds rate

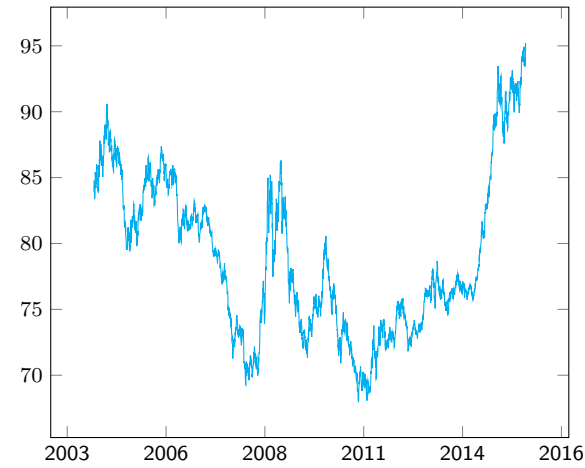


Yield spread (10 year treasury - 3 month t-bill)



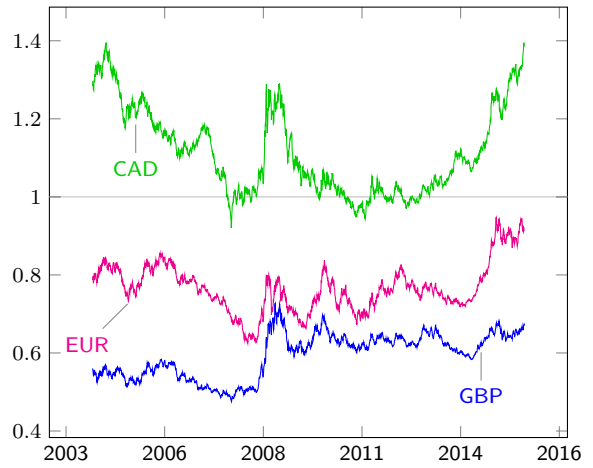
III. Trade

Trade weighted dollar (1973=100)



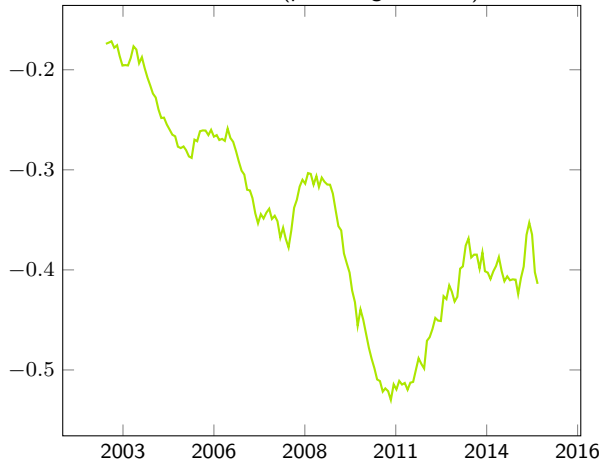
Quandl: FRED/DTWEXM

Exchange rates (CUR/USD)



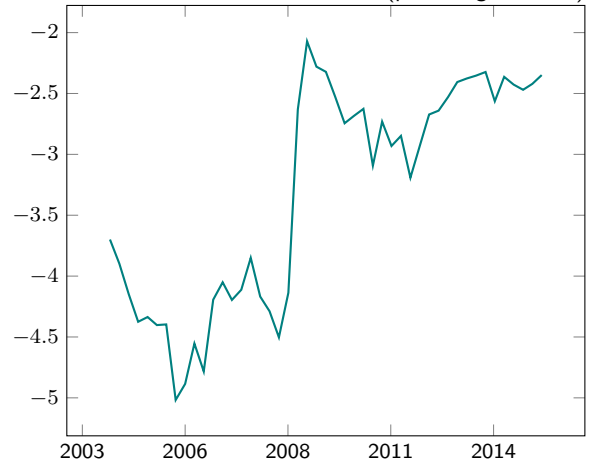
Quandl: CURRFX/USD(CUR)

Balance on advanced tech. (percentage of GDP)



Quandl: USCENSUS/IE\_0007 / FRED/GDP

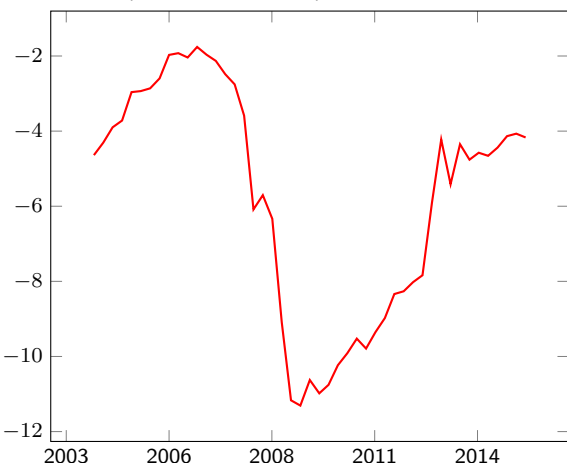
Trade balance (percentage of GDP)



Quandl: FRED/BOPGSTB / GDP

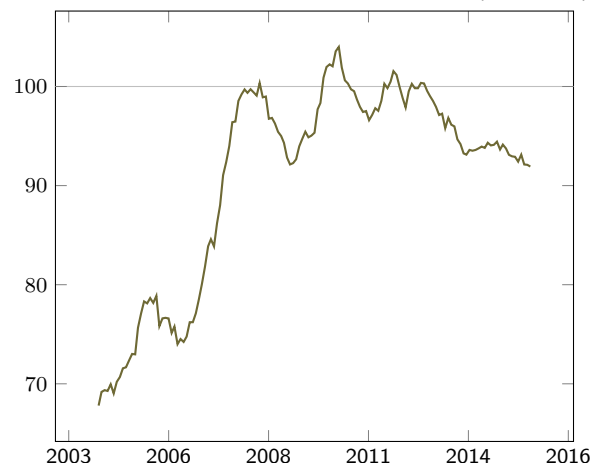
IV. Government

Gov. deficit (percentage of GDP)



Quandl: FRED/GRECPT - GEXPEND / GDP

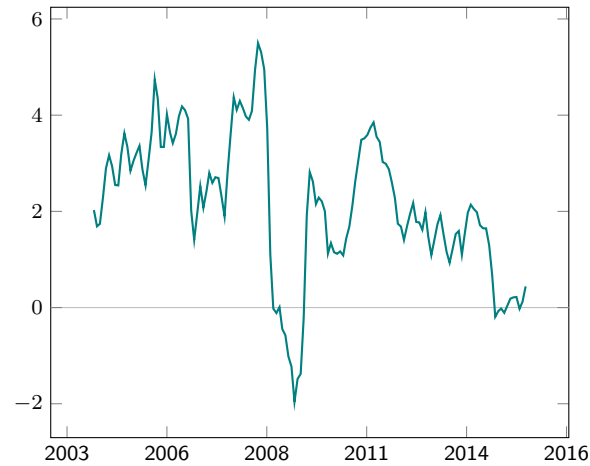
Defense and space IP (2012=100)



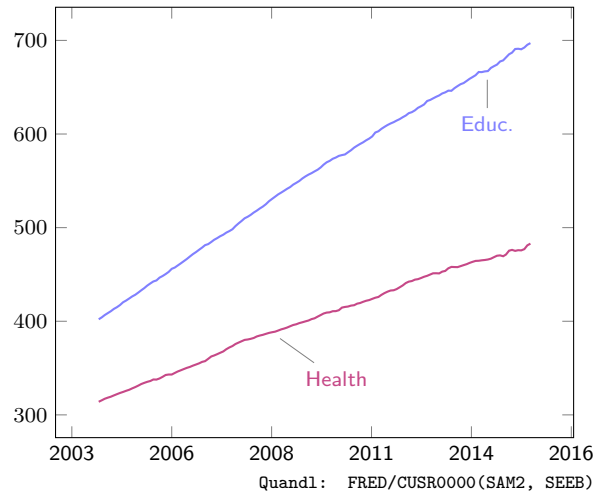
Quandl: FED/IP\_B52300\_S

V. Prices

CPI growth (percentage change)



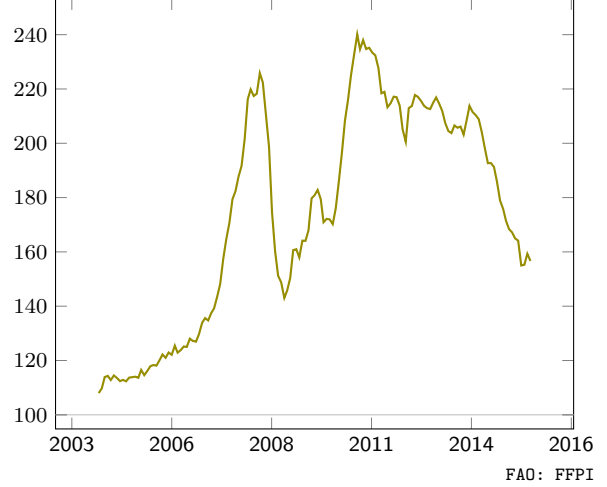
Medical and tuition costs (1982-84=100)



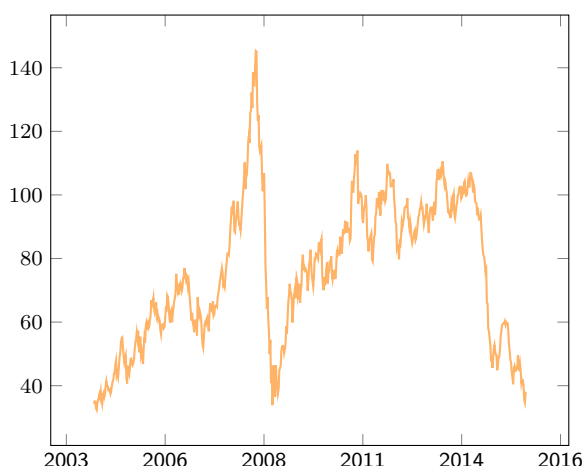
Housing price (1980=100)



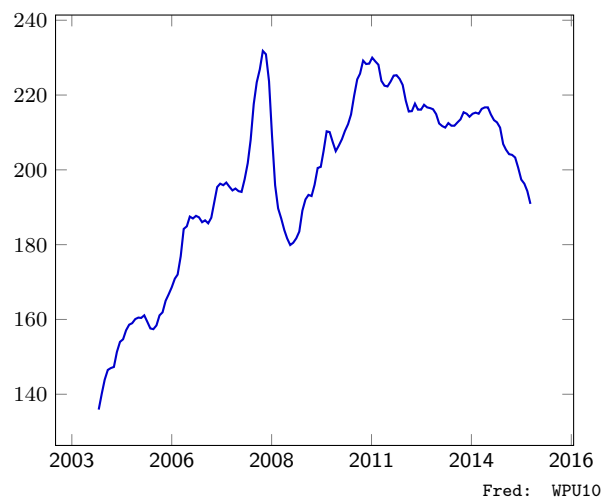
Food price (world, 2002-04=100)



Oil price (USD per barrel, WTI)



PPI for Metals (1982=100)



**VI. Exchange rates expanded**

Currency	As of:	Rate	1mo%ch	1day%ch
EUR / USD	2015-12-25	0.913	-2.99	-0.18
GBP / USD	2015-12-25	0.671	1.24	-0.21
JPY / USD	2015-12-25	120.376	-1.84	-0.26
CNY / USD	2015-12-25	6.470	1.24	-0.13
CAD / USD	2015-12-25	1.385	3.86	-0.14
AUD / USD	2015-12-25	1.377	-0.31	-0.20
CHF / USD	2015-12-25	0.987	-3.16	-0.16
DKK / USD	2015-12-25	6.816	-2.92	-0.13
NZD / USD	2015-12-25	1.466	-4.15	-0.19
SEK / USD	2015-12-25	8.407	-3.66	-0.20
NOK / USD	2015-12-25	8.687	0.45	-0.21
RUB / USD	2015-12-25	70.328	6.63	0.12
BRL / USD	2015-12-25	3.948	5.62	-0.16
TRY / USD	2015-12-25	2.918	1.48	-0.18
MXN / USD	2015-12-25	17.246	4.18	0.10
ZAR / USD	2015-12-25	15.260	7.79	0.32
NGN / USD	2015-12-25	198.799	-0.15	-0.05
EGP / USD	2015-12-25	7.831	0.02	0.01
THB / USD	2015-12-25	36.052	0.88	-0.04
INR / USD	2015-12-25	65.900	-0.60	-0.07
MYR / USD	2015-12-25	4.291	1.64	-0.05
ARS / USD	2015-12-25	13.139	26.52	1.06
PHP / USD	2015-12-25	47.204	0.30	0.00
ILS / USD	2015-12-25	3.885	0.34	-0.11

Quandl: CURRFX/USD(CUR)