

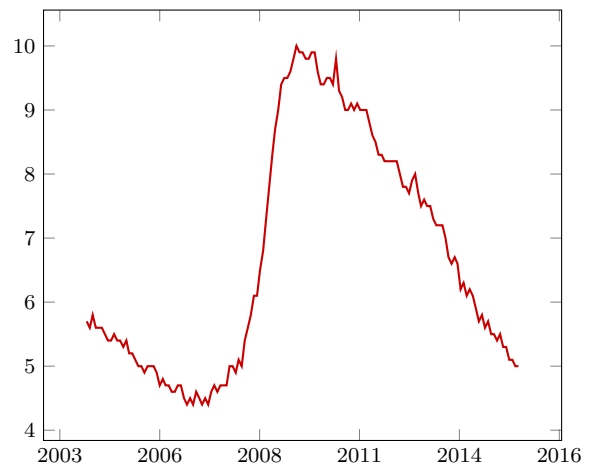
I. Macroeconomic Indicators

GDP growth (percentage change)



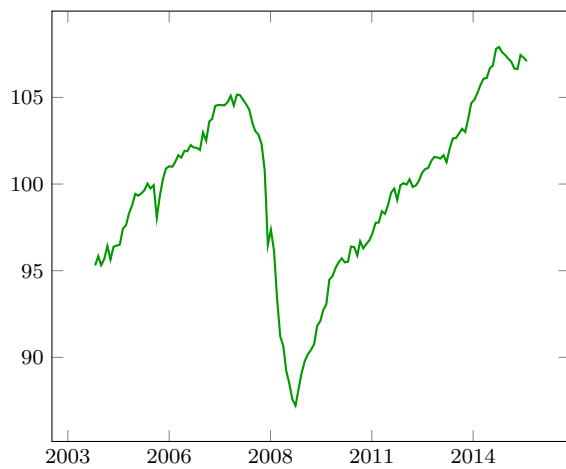
Quandl: FRED/GDPC1

Unemployment rate



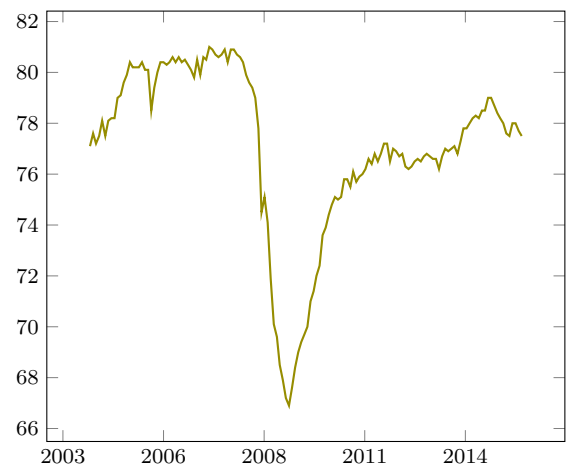
Quandl: FRED/UNRATE

Industrial production index (2007=100)



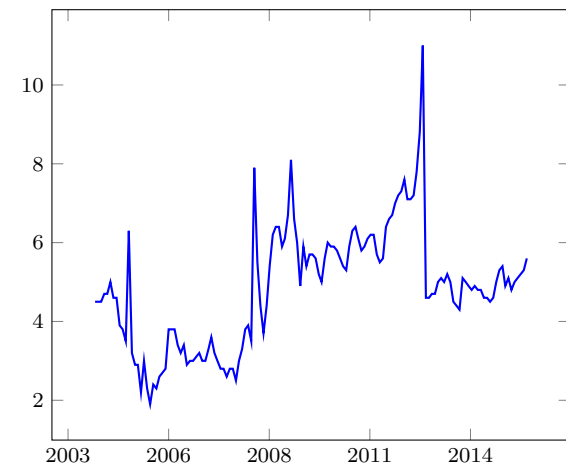
Quandl: FRED/INDPRO

Capacity utilization (percentage of capacity)



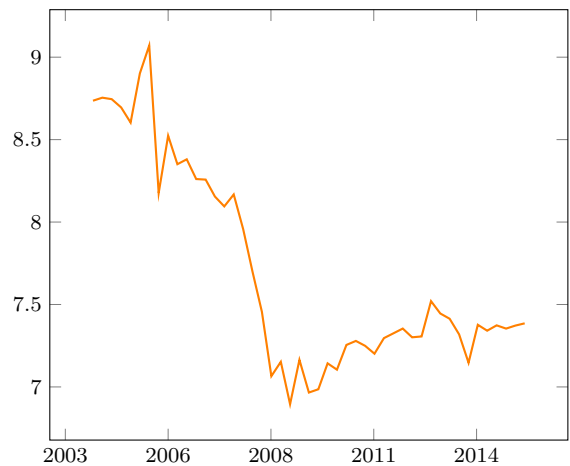
Quandl: FRED/TCU

Personal savings rate (percentage of disposable income)



Quandl: FRED/PSAVERT

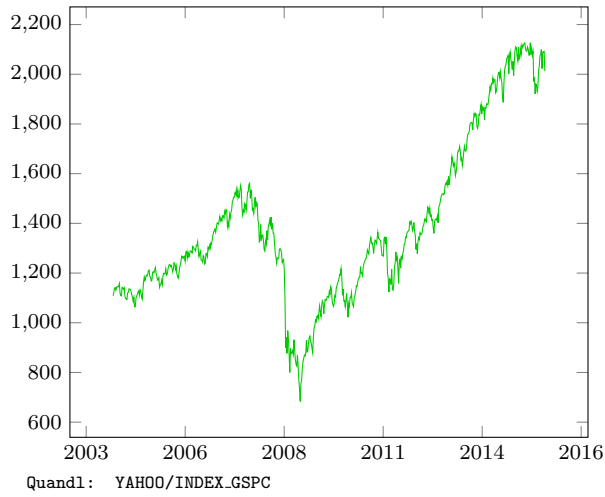
Durable goods spending (percentage of GDP)



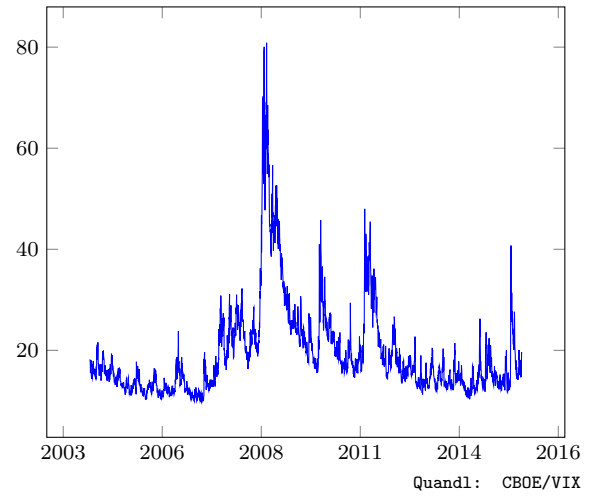
Quandl: FRED/PCEDG

II. Markets

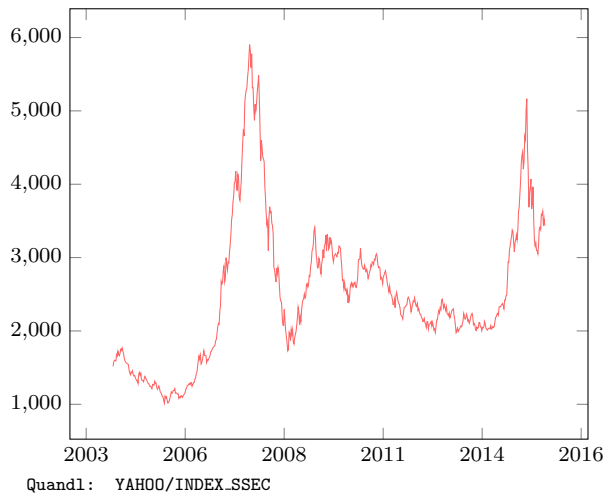
S&P 500



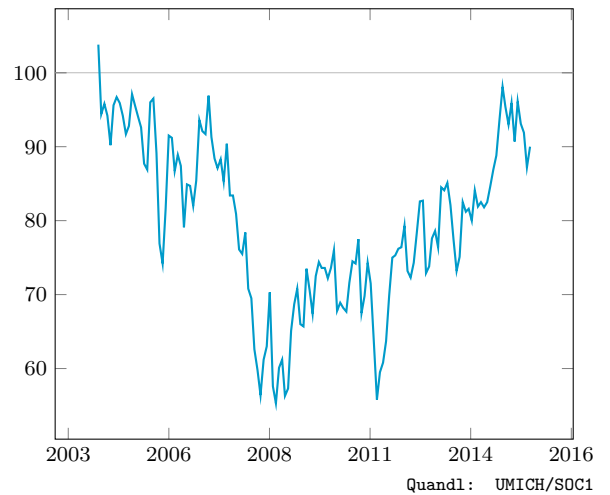
Volatility index



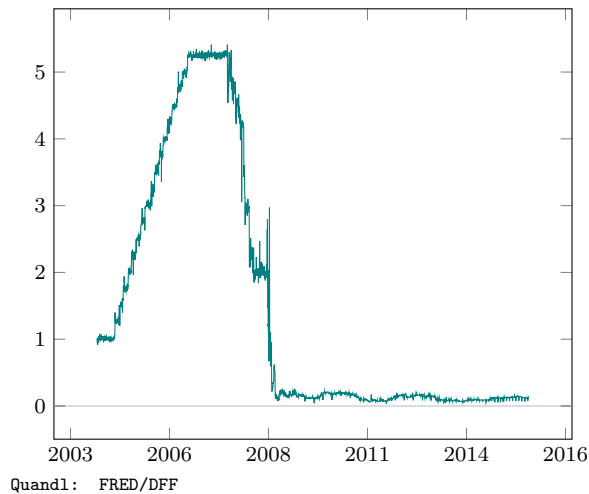
Shanghai composite index



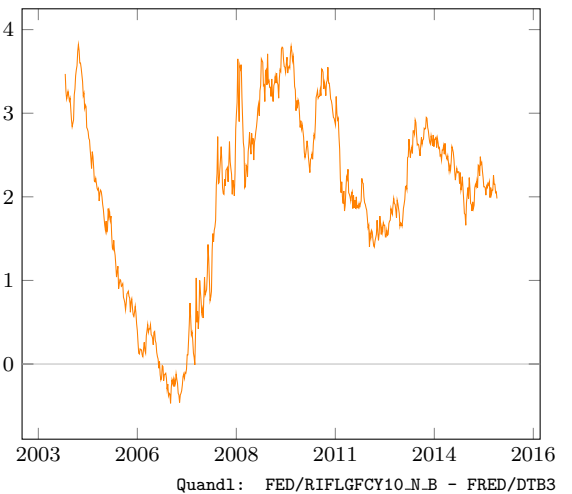
Consumer sentiment



Effective fed funds rate

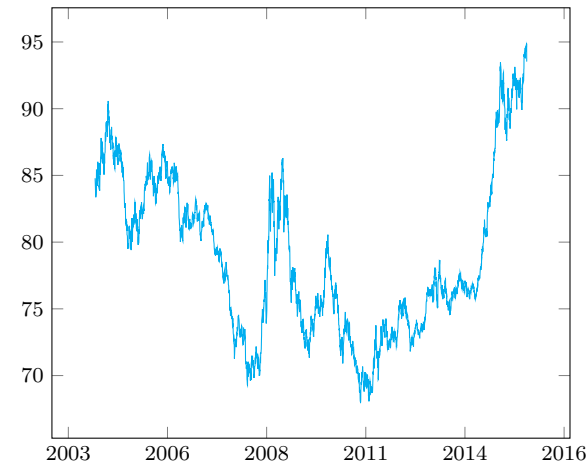


Yield spread (10 year treasury - 3 month t-bill)



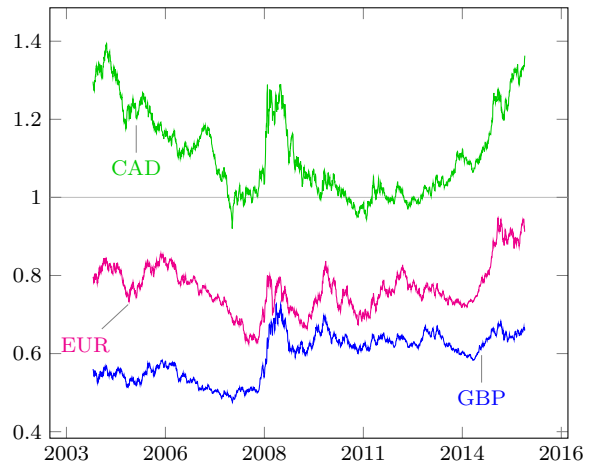
III. Trade

Trade weighted dollar (1973=100)



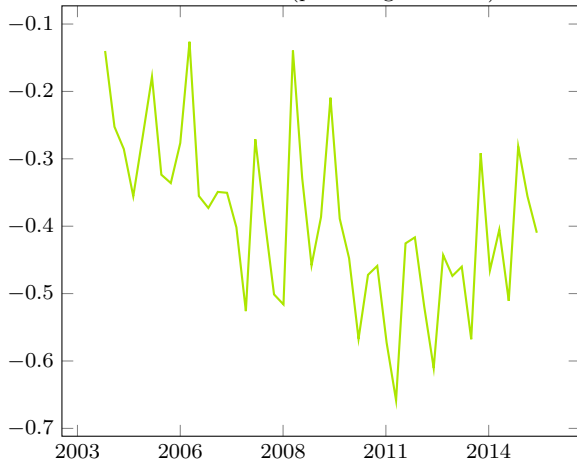
Quandl: FRED/DTWEXM

Exchange rates (CUR/USD)



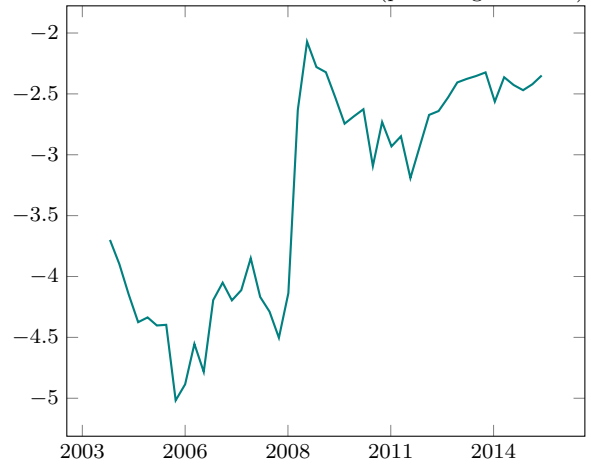
Quandl: CURRFX/USD(CUR)

Balance on advanced tech. (percentage of GDP)



Quandl: USCENSUS/IE_0007 / FRED/GDP

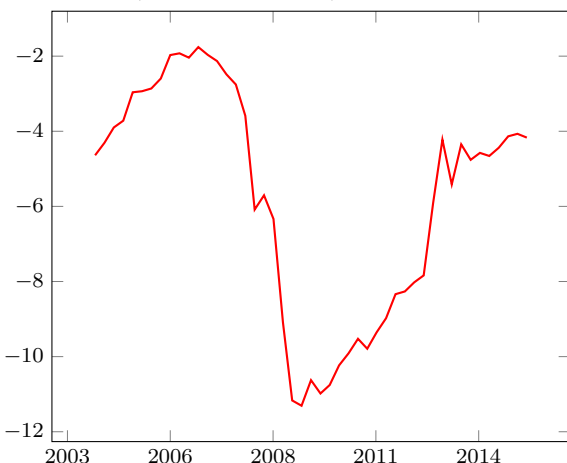
Trade balance (percentage of GDP)



Quandl: FRED/BOPGSTB / GDP

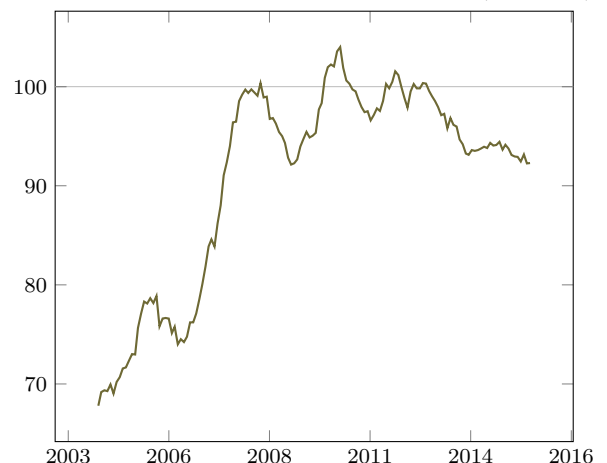
IV. Government

Gov. deficit (percentage of GDP)



Quandl: FRED/GRECPT - GEXPEND / GDP

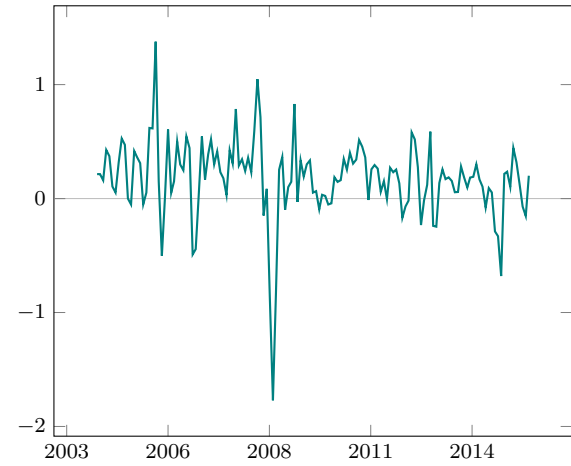
Defense and space IP (2012=100)



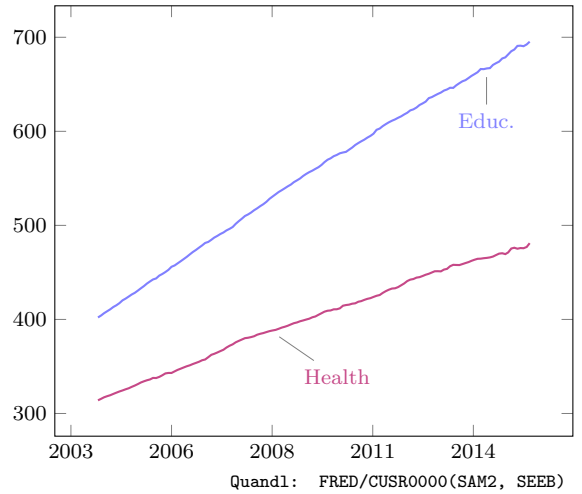
Quandl: FED/IP_B52300_S

V. Prices

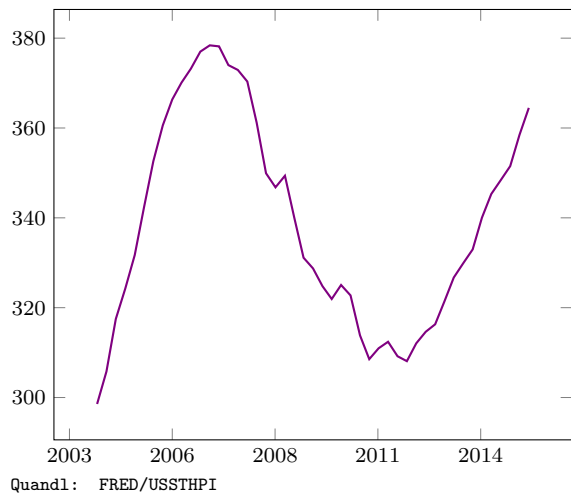
CPI growth (percentage change)



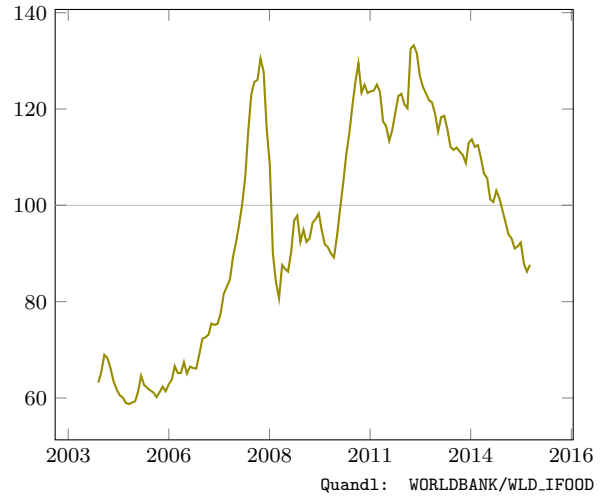
Medical and tuition costs (1982-84=100)



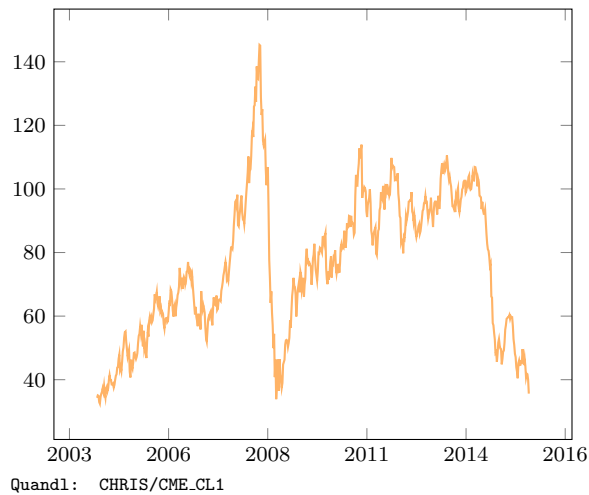
Housing price (1980=100)



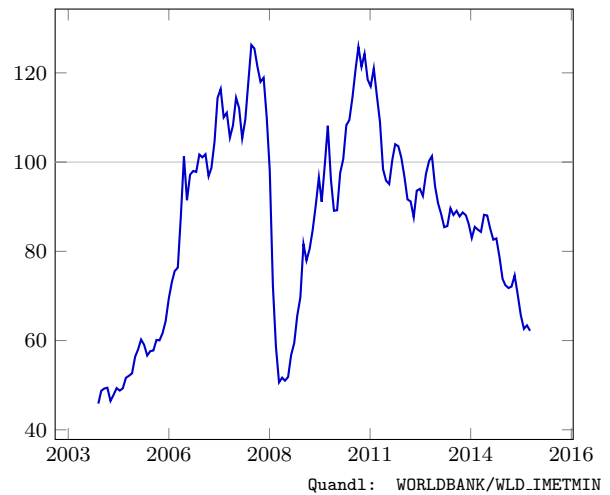
Food price (world, 2000=100)



Oil price (USD per barrel, WTI)



Metals prices (world, 2000=100)



VI. Exchange rates expanded

| Currency | As of: | Rate | 1mo%ch | 1day%ch |
|-----------|------------|---------|--------|---------|
| USD / EUR | 2015-12-11 | 0.912 | -2.14 | -0.04 |
| USD / GBP | 2015-12-11 | 0.659 | -0.14 | -0.23 |
| USD / JPY | 2015-12-11 | 121.566 | -1.24 | -0.26 |
| USD / CAD | 2015-12-11 | 1.363 | 2.67 | 0.43 |
| USD / CNY | 2015-12-11 | 6.445 | 1.26 | 0.19 |
| USD / AUD | 2015-12-11 | 1.378 | -2.88 | 0.08 |
| USD / RUB | 2015-12-11 | 68.405 | 5.51 | -0.13 |
| USD / NZD | 2015-12-11 | 1.484 | -2.93 | -0.54 |
| USD / SEK | 2015-12-11 | 8.488 | -2.34 | 0.52 |
| USD / NOK | 2015-12-11 | 8.666 | 0.45 | -0.15 |
| USD / BRL | 2015-12-11 | 3.809 | 1.08 | 1.40 |
| USD / TRY | 2015-12-11 | 2.936 | 1.09 | 0.66 |
| USD / MXN | 2015-12-11 | 17.205 | 2.66 | 0.85 |
| USD / ZAR | 2015-12-11 | 15.418 | 7.61 | 3.20 |
| USD / NGN | 2015-12-11 | 198.725 | -0.18 | 0.21 |
| USD / EGP | 2015-12-11 | 7.830 | -1.82 | 0.00 |
| USD / THB | 2015-12-11 | 36.052 | 0.50 | 0.18 |
| USD / INR | 2015-12-11 | 66.818 | 0.98 | 0.07 |
| USD / CHF | 2015-12-11 | 0.987 | -1.86 | -0.13 |
| USD / MYR | 2015-12-11 | 4.294 | -1.67 | 0.73 |
| USD / ARS | 2015-12-11 | 9.741 | 1.66 | 0.11 |
| USD / DKK | 2015-12-11 | 6.804 | -2.13 | 0.20 |
| USD / PHP | 2015-12-11 | 47.300 | 0.24 | 0.18 |
| USD / ILS | 2015-12-11 | 3.860 | -1.30 | -0.14 |

Quandl: CURRFX/USD(CUR)